

Malaysia boleh

Shipyards 'Layar Mas 292'



A United Ship Design Ro-Ro landing craft from Sapor Shipbuilding Industries

Built by Sapor Shipbuilding Industries for Malaysian owner Ertibina, 'Layar Mas 292' was designed by United Ship Design and constructed at Sapor's Sibu facilities.

With an overall length of 47 metres on an 11-metre beam, the steel vessel has a depth of 3.2 metres and a draught of 2.5 metres. She displaces 949.8 tonnes and has a deadweight calculated at 508.4 tonnes.

Owned by Malaysian company Ertibina, the vessel is powered by twin Yanmar 6LAH-STE3 main engines, each rated at 477kW at 1,900rpm, driving Finnscrew, 1,254mm by 1,270mm propellers via Reintjes WAF364L, 4.481:1 reduction gears.

Auxiliary power is provided by triple Cummins 6BT5.9D(M) generators, each 80kW at 100kVA with Stamford UCM 274 E1 alternators, developing 250kW at 1,500rpm.

A single Cummins 6BTA5.9-M3 bow thruster, rated at 235kW at 2,800rpm, enhances vessel manoeuvrability.

'Layar Mas 291' has a maximum speed of 11 knots and a deadweight of 508 tonnes.

The vessel has extensive navigation and communication instruments with products from Furuno, Samyung, Ben Marine and Saracom as well as a Daiko magnetic compass.

Sapor Shipbuilding Industries was established in August 2003. The core business of the company is shipbuilding and ship repair. The Sapor facility can accommodate the construction of twenty 30-metre tugs simultaneously. For ship repairs, Sapor's slipway can accommodate vessels up to 10,000DWT, 122 metres in length and 136.5 metres in width.

The vessel has a crew of 20.

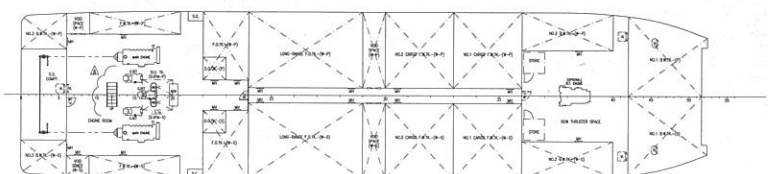
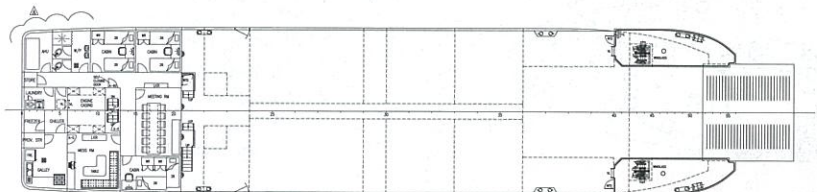
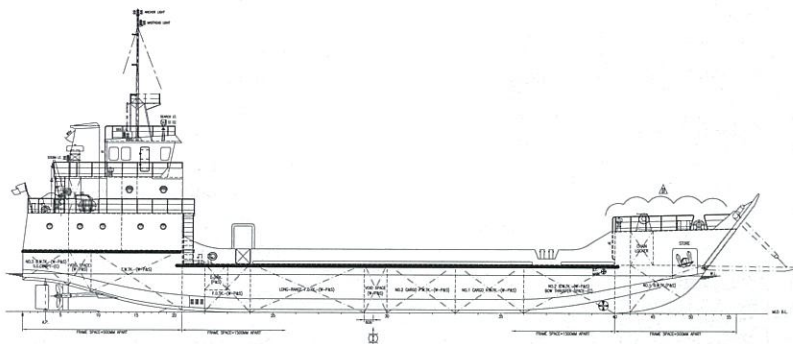
Sapor Shipbuilding Industries currently has vessels on order ranging from a 23.9-metre tug to a 37-metre AHTS to a 61-metre OSV.

For further information contact: Sapor Shipbuilding Industries, Malaysia.

PH: +60 8431 0668,

FX: +60 8432 4400,

Email: sapor@tm.net.my



'Layar Mas 292' SPECIFICATIONS

- Type of vessel: Ro-Ro landing craft
- In survey to: Bureau Veritas
- Home port: Kuching, Malaysia
- Owner: Ertibina, Malaysia
- Operator: C.E. Marine, Malaysia
- Designer: United Ship Design, Malaysia
- Builder: Sapor Shipbuilding Industries, Malaysia
- Construction material: Steel
- Length overall: 47 metres
- Length bp: 43.2 metres
- Beam: 11 metres
- Draught: 2.5 metres/4.5 metres (max)
- Depth: 3.2 metres
- Displacement: 949.8 tonnes (full load)
- Deadweight: 508.4 tonnes
- Lightship: 441.3 tonnes
- Tonnages: 499GRT, 149NRT, 520DWT
- Main engines: 2 x Yanmar 6LAH-STE3, each 477kW at 1,900rpm
- Gearboxes: 2 x Reintjes WAF364L, 4.481:1 reduction
- Propeller: 2 x Finnscrew, 1,254mm x 1,270mm
- Generators: 3 x Cummins 6BT5.9D (M), 80kW at 100kVA
- Alternators: 3 x Stamford UCM 274 E1, 250kW at 1,500rpm
- Bow thruster engine: 1 x Cummins 6BTA5.9-M3 235kW at 2,800rpm
- Maximum speed: 11 knots
- Radar: 1 x Furuno 1510MK3
- EPIRB: 1 x Saracom EB-10
- VHF: 2 x Furuno FM-8800S
- Compasses: 1 x Daiko T-150B magnetic compass, 1 x Furuno SC-50 satellite compass, Weather Wizard III
- SSB: 1 x Furuno FS-1570
- Inmarsat-C: 1 x Furuno Felcom-15
- Navtex: 1 x Samyung SNX-300
- GPS: 2 x Samyung DSPR-1400 DGPS
- Echo sounder: 1 x Samyung SES-2000
- AIS: 1 x Samyung SI-30
- Speed log: 1 x Ben Marine "blind" speed log
- Hydraulic ramp and anchor winch: 26mm Siong Ping
- Anchor: 2 x 1,020kgs stockless anchor
- Anchor chain: 357.5m/26mm
- Rescue boat: 1 x davit RH 20
- Fuel capacity: 195 tonnes
- Freshwater capacity: 269 tonnes
- Ballast Water Capacity: 182 tonnes
- Fuel Oil capacity: 69 tonnes
- Freshwater capacity: 54 tonnes
- Crew: 20 men